



HMF 1620K-RCS

The HMF 1620K-RCS is a versatile crane with two link arms and up to 6 extensions.



Main benefits

- Excellent lift-to-weight ratio
- Intuitive operation thanks to assistance systems
- Automatic load-dependent stability system

A strong crane with high lift-to-weight ratio

The HMF 1620K-RCS comes with a wide range of options as well as with a number of economic advantages for you as a crane owner. The low tare weight and reduced space requirements of the crane provide for a greater loading capacity and thus for lower fuel consumption and savings.

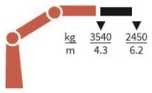
Moreover, the internal hose routing protects the crane against wear and tear, which provides for a longer lifespan as well as less downtime and maintenance of your crane.

| PERFORMANCE | 1620K1-RCS | 1620K2-RCS | 1620K3-RCS | 1620K4-RCS | 1620K5-RCS | 1620K6-RCS |
|---------------------------------------|------------|------------|------------|------------|------------|------------|
| Load Moment (tm) | 15,2 | 14,7 | 14,3 | 13,9 | 13,5 | 13,2 |
| Hydraulic reach (m) | 6,3 | 8,4 | 10,5 | 12,8 | 15 | 17,3 |
| Weight excl. stabilizers (Kg) | 1360 | 1500 | 1640 | 1775 | 1895 | 1990 |
| Weight of stabilizers, standard (Kg) | 200 | 200 | 200 | 200 | 200 | 200 |
| Lift-to-weight ratio | 9,7 | 8,6 | 7,8 | 7 | 6,4 | 6 |
| Slewing Angle (°) | 400 | 400 | 400 | 400 | 400 | 400 |
| Slewing torque (kgm) | 1795 | 1795 | 1795 | 1795 | 1795 | 1795 |
| Working pressure (bar) | 365 | 365 | 365 | 365 | 365 | 365 |
| GEOMETRY | | | | | | |
| Height above mounting surface (mm) | 2250 | 2250 | 2250 | 2250 | 2250 | 2250 |
| Width, folded, standard (mm) | 2500 | 2500 | 2500 | 2500 | 2500 | 2500 |
| Length of crane, no extra valves (mm) | 830 | 830 | 830 | 830 | 830 | 830 |

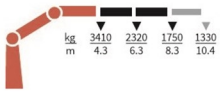
Lifting Capacity

POWER TO LIFT

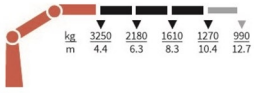
1620K1-RCS



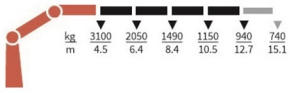
1620K2-RCS



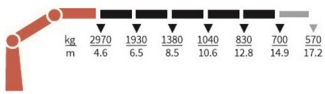
1620K3-RCS



1620K4-RCS



1620K5-RCS



1620K6-RCS



Basics

HMF 1620K-RCS

| |
|---|
| Electronic speed adaptation system, HDL-d/HD5 |
| Slew braking control |
| Progressive crane control |
| Priority flow control |
| Dual power plus link arm system |
| Proportional control valve PVG 32 |
| Internal hose routing |

Options

| |
|---|
| Control stations |
| High stand flexible |
| High stand RC |
| Top seat RC |
| Heated seat |
| Control systems |
| Radio remote control box Maxi |
| Radio remote control box Mini |
| Electrical options |
| Spotlight |
| Voltage |
| Extra valves |
| Extra valves in hose guides |
| Extra valves in hose guides, raised |
| Extra valves in hose reels, internally led |
| Multi-coupling |
| Hydraulic hoist |
| Hydraulic hoist 1500 |
| Hydraulic hoist 2500 |
| 2-part snatch block |
| Hydraulics |
| Ball valve for tank |
| Oil cooler, medium |
| Oil cooler, large |
| 2 manually controlled available stabilizer functions |
| 4 manually controlled available stabilizer functions |
| 1-4 available radio remote-controlled functions |
| Hydraulic functions for separate traverse |
| 3rd extra valve |
| Hose kit for 1 extra valve led to the jib |
| Biodegradable oil |
| Oil tank 90 l mounted on the crane |
| Radio remote control of stabilizer beams and stabilizer legs on crane |
| Mechanical options |
| Personnel basket on crane |
| Manual extension |
| Hook for manual extension |
| Crane orientation |
| Shielding of load-holding valve |
| Shielding of jib cylinder |
| Mounting bolt kit |
| Fittings for mounting bolt kits |
| Stability and safety |

| |
|--|
| Electronic vehicle stability EVS |
| AutoSwitch |
| Monitoring of stabilizer legs down |
| Monitoring of stabilizer legs and beam |
| Cabin anti-crash |
| 2-stage load moment limitation |
| Preparation for alternative stability system |
| Stabilizer duty control |
| Alarm flash on stabilizer legs |
| Calibration of vehicle stability system during crane operation |
| Light tower |
| Temperature monitoring |
| High stand safety system - quadrant |
| Quadrant operator protection system |
| Beam and height warning |
| Beam and park warning |
| Stabilizer leg warning |
| Stabilizer beams and legs |
| Hydraulic stabilizer beams 4.6 m - 6.5 m |
| Manual stabilizer beams 4.6 m - 5.6 m |
| Hydraulic swing-up stabilizer legs |
| Manual swing-up stabilizer legs with gas spring |
| Manual swing-up stabilizer legs |
| Fixed vertical stabilizer legs |
| Fixed vertical stabilizer legs, long |
| Footplate with ball joint |
| Footplate extended |
| Colours |
| RAL colors |