



POWER TO LIFT

HMF 270K-RC

The HMF 270K-RC is a reliable and sturdy crane ideal for smaller vehicles.



Improved payload for maximal capacity

The HMF 270K-RC is a compact knuckle boom crane with a reliable and sturdy design. The crane is suitable for many different purposes and is available with two or three hydraulic extensions for extra-long reach.

The crane is designed for great manoeuvrability and is fast and easy to operate. It is furthermore designed with a low tare weight, which secures an improved payload on the truck body.

When stowed during transport, the crane can be folded up to a width of only 1.7 m making it possible to mount it on small vehicles. This crane is also available with a width of 2.0 m in order to suit most vehicles.

Main benefits

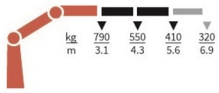
- Very compact design
- Radio remote control system for total freedom
- Long lifespan

PERFORMANCE	270-K2-RC	270-K3-RC
Load Moment (tm)	2,5	2,4
Hydraulic reach (m)	5,64	6,99
Weight excl. stabilizers (Kg)	386	421
Weight of stabilizers, standard (Kg)	59	59
Lift-to-weight ratio	5,6	5
Slewing Angle (°)	370	370
Slewing torque (kgm)	390	390
Working pressure (bar)	240	240
GEOMETRY		
Height above mounting surface (mm)	1527	1527
Width, folded, standard (mm)	1700	1700
Length of crane, no extra valves (mm)	538	564

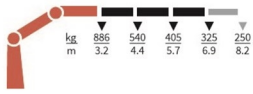
Lifting Capacity

POWER TO LIFT

270-K2-RC



270-K3-RC



Basics

HMF 270K-RC

RCL safety system

Options

Control systems
Radio remote control box Mini
Electrical options
Spotlight
Voltage
Extra valves
2 extra valves
Extra valves in hose guides
Hydraulics
Oil tank 20 l mounted on the crane
High-pressure filter
Biodegradable oil
Mechanical options
Mechanical slew limitation
Crane width
Manual extension
Crane orientation
Mounting bolt kit
Stability and safety
Alarm flash on stabilizer legs
Beam and height warning
Safety system for cranes without CE equipment incl. spirit level
Load-holding valve on slewing
CE Safety system for crane with radio remote control
Colours
RAL colors