



HMF 340K-RC

The HMF 340K-RC is a sturdy and versatile crane with great flexibility for a wide range of different tasks.



High lifting capacity in a horizontal boom position

The HMF 340K-RC is a compact knuckle boom crane with an excellent lift-to-weight ratio. This crane is in a compact design with a short platform length which offers good utilisation of the truck body which ultimately means lower cost of ownership.

The crane is furthermore reliable and sturdy and can be used for a wide range of different tasks. The link arm on the jib provides a high lifting capacity at long reach in a horizontal boom position. This crane is also available with a width of 2.0 m in order to suit most vehicles.

Main benefits

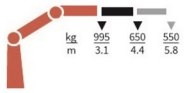
- Radio remote control system for total freedom
- Very compact design
- Long lifespan

PERFORMANCE	340-K1-RC	340-K2-RC	340-K3-RC
Load Moment (tm)	3,2	3,2	3,2
Hydraulic reach (m)	4,39	5,76	7,15
Weight excl. stabilizers (Kg)	418	468	508
Weight of stabilizers, standard (Kg)	72	72	72
Lift-to-weight ratio	6,5	5,9	5,5
Slewing Angle (°)	370	370	370
Slewing torque (kgm)	550	600	600
Working pressure (bar)	220	240	240
GEOMETRY			
Height above mounting surface (mm)	1591	1591	1591
Width, folded, standard (mm)	1700	1700	1700
Length of crane, no extra valves (mm)	516	516	516

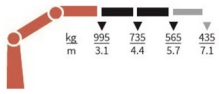
Lifting Capacity

POWER TO LIFT

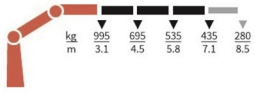
340-K1-RC



340-K2-RC



340-K3-RC



Basics

HMF 340K-RC

RCL safety system
Single power plus link arm system

Options

Control systems
Radio remote control box Mini
Electrical options
Spotlight
Voltage
Extra valves
Extra valves in hose guides
Hydraulics
Oil tank 20 l mounted on the crane
High-pressure filter
Biodegradable oil
Mechanical options
Mechanical slew limitation
Crane width
Manual extension
Crane orientation
Mounting bolt kit
Stability and safety
Alarm flash on stabilizer legs
Beam and height warning
Safety system for cranes without CE equipment incl. spirit level
Load-holding valve on slewing
CE Safety system for crane with radio remote control
Colours
RAL colors