



POWER TO LIFT

HMF 4020K-RCS

The HMF 4020K-RCS has a low tare weight and reduced space requirements giving optimum vehicle payload.



Main benefits

- Extensive range of peripheral options available i.e. fly-jib or grab.
- Strength and operational safety
- Great flexibility and smooth operation for demanding tasks

All-round crane for heavy lifting tasks

The HMF 4020K-RCS is a radio remote controlled and versatile crane with many options that can be personalised to fit your exact crane needs.

The crane has a low tare weight and reduced space requirements which provide for maximum use of the truck body as well as savings on fuel.

Additionally, the crane can be delivered with HMF's load-dependent EVS system monitoring and ensuring stability.

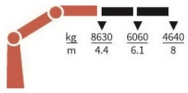
The crane is furthermore designed to be service-friendly and equipped with internal hose routing, which makes it easy to maintain, and protects the crane against wear and tear. All this to ensure a low cost of ownership.

PERFORMANCE	4020-K2	4020-K3	4020-K4	4020-K5	4020-K6	4020-K7	4020-K8
Load Moment (tm)	38	37	35,9	34,9	34,7	33,9	33,7
Hydraulic reach (m)	8,1	10,1	12,2	14,35	16,6	18,95	21,3
Weight excl. stabilizers (Kg)	3150	3410	3660	3900	4080	4240	4400
Weight of stabilizers, standard (Kg)	470	470	470	470	470	470	470
Lift-to-weight ratio	10,5	9,5	8,7	8	7,6	7,2	6,9
Slewing Angle (°)	∞	∞	∞	∞	∞	∞	∞
Slewing torque (kgm)	4000	4000	4000	4000	4000	4000	4000
Working pressure (bar)	365	365	365	365	365	365	365
GEOMETRY							
Height above mounting surface (mm)	2384	2384	2384	2384	2384	2384	2384
Width, folded, standard (mm)	2518	2518	2518	2518	2518	2518	2518
Length of crane, no extra valves (mm)	1148	1148	1148	1148	1148	1274	1274

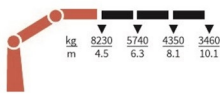
Lifting Capacity

POWER TO LIFT

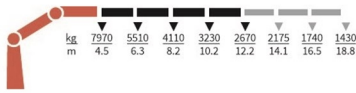
4020-K2



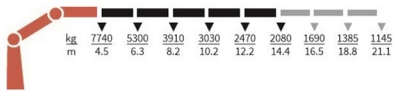
4020-K3



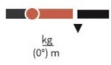
4020-K4



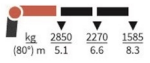
4020-K5



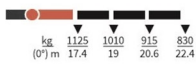
FJ1000-K2



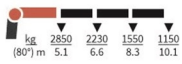
FJ1000-K2



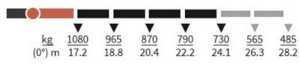
FJ1000-K3



FJ1000-K3



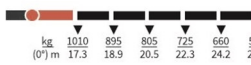
FJ1000-K4



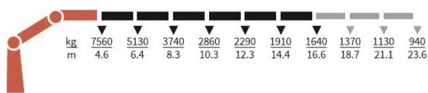
FJ1000-K4



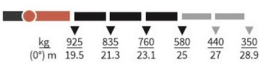
FJ1000-K5



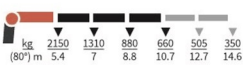
4020-K6



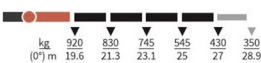
FJ600-K3



FJ600-K3



FJ600-K4



Even though we do our best, errors in content may occur. The content of this material is for general information purpose. Cranes in the pictures may be featured with optional equipment, which do not correspond to the standard version. Please note, that weights may vary with a 5% deviation. As we update content continuously, please ensure you have the latest information, which you can find on hmfcranes.com. 23-08-2021

Basics

Electronic speed adaptation system, HDL-d/HD5
Progressive crane control
Priority flow control
Dual power plus link arm system
Proportional control valve PVG 32
Radio remote control of stabilizer beams and stabilizer legs on crane
Internal hose routing

Options

Control systems
Radio remote control box Maxi
Radio remote control box Mini
Electrical options
Spotlight
Voltage
Extra valves
2 extra valves
Extra valves in hose guides
Extra valves in hose reels, internally led
Extra valves in hose reels, externally led
Multi-coupling
Fly-jib
Fly-jib 1000
Fly-jib 600
Personnel basket on fly-jib
Hydraulic hoist
Hydraulic hoist 2500
Hydraulic hoist 3200
2-part snatch block
Hydraulics
Ball valve for tank
Oil cooler, medium
Oil cooler, large
1 radio remote controlled available proportional function
3rd extra valve
Hose kit for 1 extra valve led to the jib
Biodegradable oil
Mechanical options
Personnel basket on crane
Manual extension
Shielding of load-holding valve
Protective guard at the rear of the jib
Mounting bolt kit
Fittings for mounting bolt kits
Stability and safety
Electronic vehicle stability EVS
Monitoring of stabilizer legs down
Monitoring of boom direction, stabilizer legs and each stabilizer beam
2-stage load moment limitation
Preparation for alternative stability system
Alarm flash on stabilizer legs
Calibration of vehicle stability system during crane operation

Light tower
Temperature monitoring
Beam and height warning
Stabilizer leg warning
Stabilizer beams and legs
Hydraulic stabilizer beams 5.6 m - 7.8 m
Hydraulic swing-up stabilizer legs
Manual swing-up stabilizer legs
Fixed vertical stabilizer legs
Footplate with ball joint
Footplate extended
Colours
RAL colors