



POWER TO LIFT

HMF 5020K-RCS

The HMF 5020K-RCS has a low tare weight, which, combined with the minimum space requirements, gives optimum vehicle payload.



Main benefits

- Suitable for a wide range of tasks
- Strength and operational safety
- Great flexibility and smooth operation for demanding tasks

Precise crane with smooth operation and heavy lifting

The HMF 5020K-RCS is a strong crane available with a wide variety of options.

The crane has a dual Power Plus link arm system, which ensures an excellent lifting capacity and makes it possible both to lift heavy loads close to the column and also lift bulky items at long reach and in high positions.

The service-friendly design of the crane also contributes to easy maintenance and low costs of ownership. The crane is furthermore equipped with internal hose routing, which not only ensures a clean design, but also protects the crane from wear and tear.

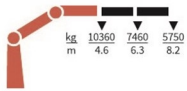
Additionally, the crane can be delivered with HMF's load-dependent EVS system monitoring and ensuring stability.

PERFORMANCE	5020-K2	5020-K3	5020-K4	5020-K5	5020-K6	5020-K7	5020-K8
Load Moment (tm)	47,7	46,2	45,9	44,7	43,6	43,4	42,4
Hydraulic reach (m)	8,25	10,25	12,5	14,5	16,75	19,1	21,45
Weight excl. stabilizers (Kg)	3610	3900	4170	4420	4620	4800	4975
Weight of stabilizers, standard (Kg)	500	500	500	500	500	500	500
Lift-to-weight ratio	11,6	10,5	9,8	9,1	8,5	8,2	7,7
Slewing Angle (°)	∞	∞	∞	∞	∞	∞	∞
Slewing torque (kgm)	5000	5000	5000	5000	5000	5000	5000
Working pressure (bar)	365	365	365	365	365	365	365
GEOMETRY							
Height above mounting surface (mm)	2398	2398	2398	2398	2398	2438	2438
Width, folded, standard (mm)	2519	2519	2519	2519	2519	2519	2519
Length of crane, no extra valves (mm)	1198	1198	1198	1198	1198	1298	1298

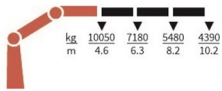
Lifting Capacity

POWER TO LIFT

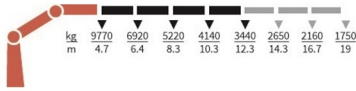
5020-K2



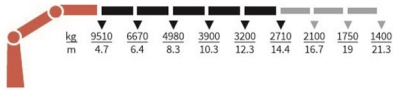
5020-K3



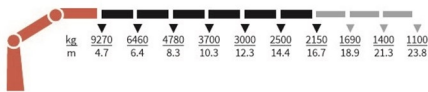
5020-K4



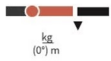
5020-K5



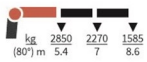
5020-K6



FJ1000-K2



FJ1000-K2



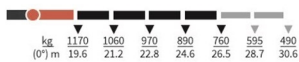
FJ1000-K3



FJ1000-K3



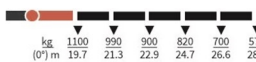
FJ1000-K4



FJ1000-K4



FJ1000-K5



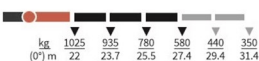
FJ1000-K5



5020-K7



FJ600-K3



Even though we do our best, errors in content may occur. The content of this material is for general information purpose. Cranes in the pictures may be featured with optional equipment, which do not correspond to the standard version. Please note, that weights may vary with a 5% deviation. As we update content continuously, please ensure you have the latest information, which you can find on hmfcranes.com. 23-08-2021

Basics

Electronic speed adaptation system, HDL-d/HD5
Progressive crane control
Priority flow control
Dual power plus link arm system
Proportional control valve PVG 32
Radio remote control of stabilizer beams and stabilizer legs on crane
Internal hose routing

Options

Control systems
Radio remote control box Maxi
Radio remote control box Mini
Electrical options
Spotlight
Voltage
Extra valves
2 extra valves
Extra valves in hose guides
Extra valves in hose reels, internally led
Extra valves in hose reels, externally led
Multi-coupling
Fly-jib
Fly-jib 1000
Fly-jib 600
Personnel basket on fly-jib
Hydraulic hoist
Hydraulic hoist 2500
Hydraulic hoist 3200
2-part snatch block
Hydraulics
Ball valve for tank
Oil cooler, medium
Oil cooler, large
1 radio remote controlled available proportional function
3rd extra valve
Hose kit for 1 extra valve led to the jib
Biodegradable oil
Mechanical options
Personnel basket on crane
Manual extension
Shielding of load-holding valve
Protective guard at the rear of the jib
Mounting bolt kit
Fittings for mounting bolt kits
Stability and safety
Electronic vehicle stability EVS
Monitoring of stabilizer legs down
Monitoring of boom direction, stabilizer legs and each stabilizer beam
2-stage load moment limitation
Preparation for alternative stability system
Alarm flash on stabilizer legs
Calibration of vehicle stability system during crane operation

Light tower
Temperature monitoring
Beam and height warning
Stabilizer leg warning
Stabilizer beams and legs
Hydraulic stabilizer beams 5.6 m - 7.8 m
Hydraulic swing-up stabilizer legs
Manual swing-up stabilizer legs
Fixed vertical stabilizer legs
Footplate with ball joint
Footplate extended
Colours
RAL colors