



POWER TO LIFT

HMF 7020K-RCS

The HMF 7020K-RCS will give you speed and strength for heavy lifting along with precise control.



Main benefits

- Strength and operational safety
- Great flexibility and smooth operation for demanding tasks
- Suited for a wide range of tasks from heavy lifting to assembly work

A strong and safe crane with a lot of Power to lift

The 7020K-RCS is one of our most powerful cranes. It is available with a wide range of options, so that it can be modified according to your exact needs.

The crane, furthermore, comes with a number of economic advantages. The low tare weight and reduced space requirements of the crane provide full utilisation of your truck body as well as savings on fuel.

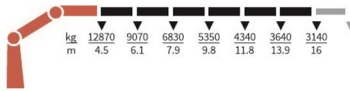
The construction of the crane is moreover designed in a service-friendly manner, which provides for a long lifespan of your crane and in the end low costs of ownership.

PERFORMANCE	7020-K6	7020-K7	7020-K8
Load Moment (tm)	57,9	57,2	56,1
Hydraulic reach (m)	16,1	18,3	20,6
Weight excl. stabilizers (Kg)	5715	5915	6115
Weight of stabilizers, standard (Kg)	925	925	925
Lift-to-weight ratio	8,7	8,4	8
Slewing Angle (°)	∞	∞	∞
Slewing torque (kgm)	7142	7142	7142
Working pressure (bar)	375	375	375
GEOMETRY			
Height above mounting surface (mm)	2480	2480	2480
Width, folded, standard (mm)	2520	2520	2520
Length of crane, no extra valves (mm)	1550	1550	1550

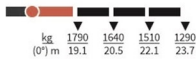
Lifting Capacity

POWER TO LIFT

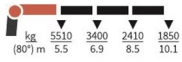
7020-K6



FJ1400-K3



FJ1400-K3



FJ1400-K4



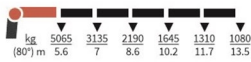
FJ1400-K4



FJ1400-K5



FJ1400-K5



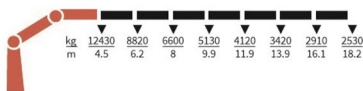
FJ1400-K6



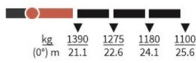
FJ1400-K6



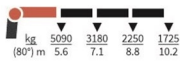
7020-K7



FJ1400-K3



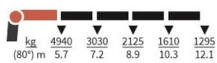
FJ1400-K3



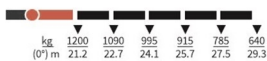
FJ1400-K4



FJ1400-K4



FJ1400-K5



Even though we do our best, errors in content may occur. The content of this material is for general information purpose. Cranes in the pictures may be featured with optional equipment, which do not correspond to the standard version. Please note, that weights may vary with a 5% deviation. As we update content continuously, please ensure you have the latest information, which you can find on hmfcranes.com. 23-08-2021

Basics

HMF 7020K-RCS

Electronic speed adaptation system, HDL-d/HD5
Progressive crane control
Priority flow control
Dual power plus link arm system
Two slewing gears
Proportional control valve PVG 32
Radio remote control of stabilizer beams and stabilizer legs on crane
Internal hose routing

Options

Control systems
Radio remote control box Maxi
Power display remote control
Electrical options
Spotlight
Voltage
Extra valves
2 extra valves
Extra valves in hose reels, internally led
Extra valves in hose reels, externally led
Multi-coupling
Fly-jib
Fly-jib 1400
Personnel basket on fly-jib
Hydraulic hoist
Hydraulic hoist 3200
2-part snatch block
Hydraulics
Ball valve for tank
Oil cooler, large
Available hydraulic functions, crane mode
Available hydraulic functions, stabilizer mode
Hydraulic functions for separate traverses
1 radio remote controlled available proportional function
Biodegradable oil
Oil tank 320 l mounted on the crane
Oil tank 390 l mounted on the crane
Prepared for front stabilizer
Mechanical options
Manual extension
Protective guard at the rear of the jib
Mounting bolt kit
Fittings for mounting bolt kits
Stability and safety
Electronic vehicle stability EVS
AutoSwitch
Monitoring of stabilizer legs down
Cabin anti-crash
Preparation for alternative stability system
Alarm flash on stabilizer legs
Calibration of vehicle stability system during crane operation
Light tower

Temperature monitoring
Beam and height warning
Stabilizer leg warning
Stabilizer beams and legs
Hydraulic stabilizer beams 8.4 m
Hydraulic swing-up stabilizer legs
Manual swing-up stabilizer legs
Footplate with ball joint
Colours
RAL colors