



POWER TO LIFT

# HMF 810K-RC

The HMF 810K-RC is a versatile crane with low tare weight and high lifting capacity.



## Main benefits

- Minimum space requirements
- Radio remote control system for total freedom
- Wear-resistant

## A radio remote controlled crane for total freedom

The HMF 810K-RC is a flexible crane with full speed in the entire working area. The crane is fitted with a low tare weight compared with high lifting capacity, which ensures high loading capacity and efficiency during loading and unloading.

The crane is furthermore equipped with the HMF single Power Plus link arm system which e.g. ensures high working speed when loading and unloading with grab.

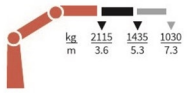
It also has an over-bending of 15° which means that it is capable of lifting the maximum capacity in the maximum over-bending position.

PERFORMANCE	810-K1-RC	810-K2-RC	810-K3-RC	810-K4-RC
Load Moment (tm)	7,6	7,5	7,3	7,1
Hydraulic reach (m)	5,3	7,3	9,1	11
Weight excl. stabilizers (Kg)	665	740	810	870
Weight of stabilizers, standard (Kg)	115	115	115	115
Lift-to-weight ratio	9,8	8,8	7,9	7,2
Slewing Angle (°)	400	400	400	400
Slewing torque (kgm)	840	840	840	840
Working pressure (bar)	325	325	325	325
GEOMETRY				
Height above mounting surface (mm)	1910	1910	1910	1910
Width, folded, standard (mm)	2220	2220	2220	2220
Length of crane, no extra valves (mm)	664	664	664	664

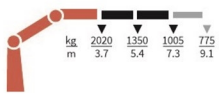
# Lifting Capacity

POWER TO LIFT

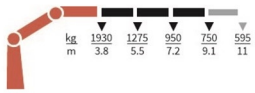
810-K1-RC



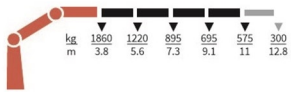
810-K2-RC



810-K3-RC



810-K4-RC



## Basics

HMF 810K-RC

Electronic speed adaptation system, HDL-d/HD4
Single power plus link arm system
Proportional control valve PVG 16
Internal hose routing

## Options

<b>Control systems</b>
Radio remote control box Maxi
Radio remote control box Mini
<b>Electrical options</b>
Spotlight
Voltage
<b>Extra valves</b>
Extra valves in hose guides
Extra valves in hose reels, internally led
<b>Hydraulic hoist</b>
Hydraulic hoist 1000
<b>Hydraulics</b>
Ball valve for tank
Oil cooler, small
2 manually controlled available stabilizer functions
Biodegradable oil
Oil tank 50 l mounted on the crane
<b>Mechanical options</b>
Mechanical slew limitation
Manual extension
Hook for manual extension
Crane orientation
Mounting bolt kit
Fittings for mounting bolt kits
<b>Stability and safety</b>
Electronic vehicle stability EVS
Monitoring of stabilizer legs down
Monitoring of stabilizer legs and beam
Monitoring of boom direction, stabilizer legs and each stabilizer beam
2-stage load moment limitation
Preparation for alternative stability system
Alarm flash on stabilizer legs
Calibration of vehicle stability system during crane operation
Light tower
Temperature monitoring
Beam and height warning
Stabilizer leg warning
<b>Stabilizer beams and legs</b>
Manual stabilizer beams 3.4 m - 5.2 m
Hydraulic stabilizer beams 4.4 m - 5.2 m
Manual swing-up stabilizer legs with gas spring
Manual swing-up stabilizer legs
Fixed vertical stabilizer legs
Footplate with ball joint
Footplate extended
<b>Colours</b>

RAL colors